

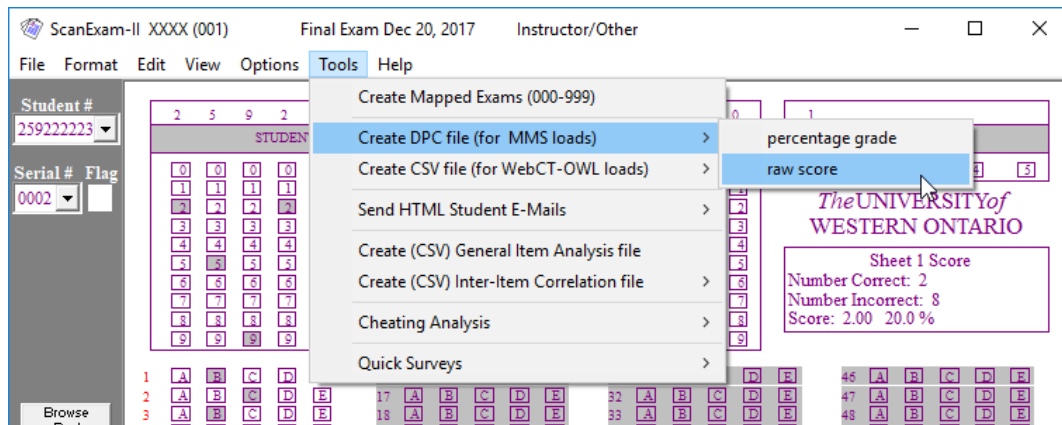


Creating a DPC file for OWL

Creating a DPC file for OWL Gradebook Uploads

Do you have other DAT files saved? Be sure the error checking process has been completed for each file.

OWL does not allow percentage grade uploads. The raw score must be saved within ScanExam-II and then that file is uploaded. A percentage grade calculation can be done once the raw score is in your OWL Gradebook.



Single Versions:

1. Tools menu -> select 'Create DPC file' (ignore for MMS loads) -> then select 'raw score'
2. Save the raw score DPC file using a filename you choose -> make sure to keep the .dpc file extension (i.e. Crs1111-001rs.dpc).

Multiple Version:

1. Repeat the process for each of the versions/sections
2. Once you have completed this step for all the versions of your exam, open each of the DPC files in Notepad and combine the data from all versions into one single DPC file



SCANTRON SERVICES | OOR

Creating a DPC file for OWL

Print your results

Once the DAT file has been saved, you can print out any of the results or statistics using the ScanExam-II "File" menu.

