



SCANTRON SERVICES | OOR

Printouts and PDF options

Printing and PDF Options

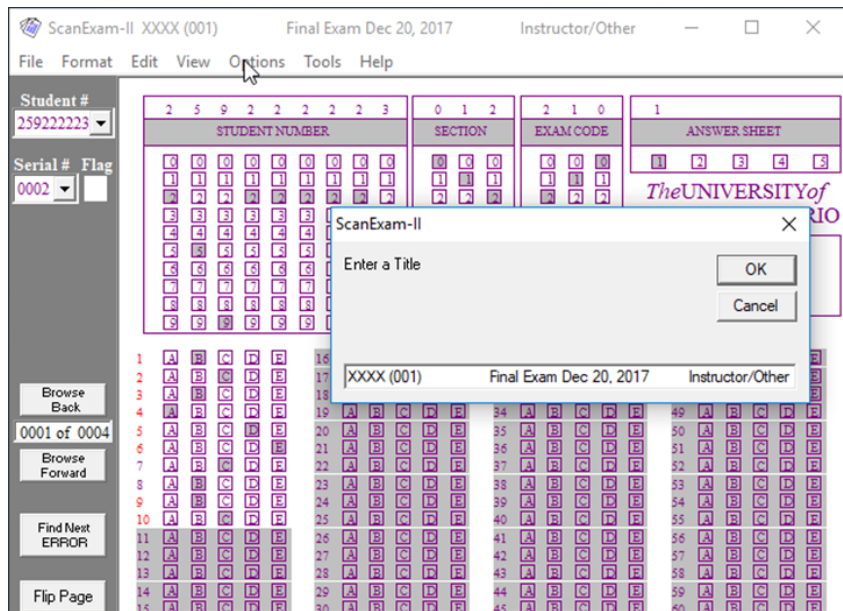
1. Open your DAT file and add a header

Options menu -> Title

For Example:

XXXX (001)	Final Exam Dec 20, 2017	Instructor/Other
------------	-------------------------	------------------

Click 'OK' Save the DAT again:
File -> Save DAT as...

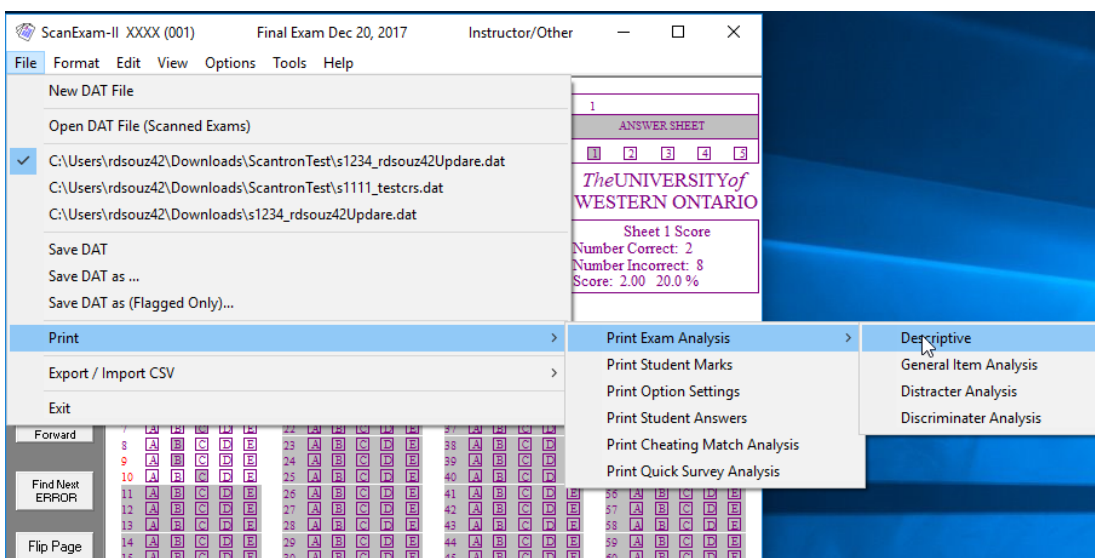




Printouts and PDF options

2. Print & PDF

File menu -> Print -> Print Exam Analysis ->



Descriptive Statistics

Descriptive statistics summary including graphs (i.e. pie chart)

- These statistics include the exam Mean, Standard Deviation, Median, Mode, Minimum, Maximum, Skew, N of Statistic, Number of A+, A, B, C, D, and F grades.
- Three graphs help depict the results. A bar graph of the letter grade distribution, a pie chart of the letter grade distribution and a frequency distribution graph of actual student percentage grades.
- This chart is graphed to an accuracy of one decimal place and the mean is shown in red. It should also be noted that all the statistics employ their “population” form and not the “sample” form.



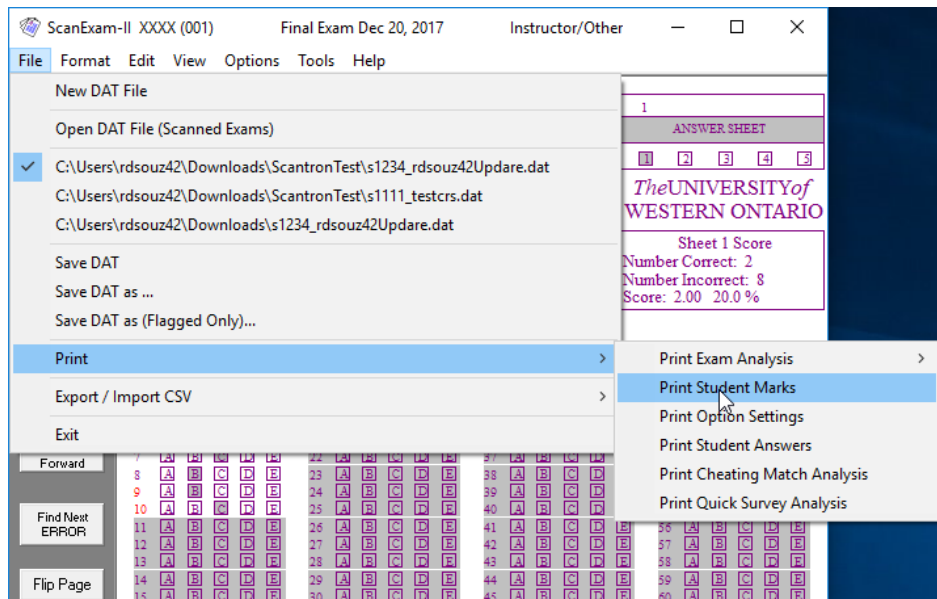
Printouts and PDF options

General Item Analysis

General Item Analysis is the tabular summary of questions (i.e. right vs wrong)

- This analysis provides tabular display of each items difficulty rating, point bi-serial, number of students answering the item correctly and incorrectly, the correct answer, the distribution of selections made for the item and Cronbach's alpha (coefficient of reliability). A graphical display of the question difficulty and point bi-serial is also provided.

File menu -> Print ->...



Student Marks

Summary of all student marks (all percentage grades ordered by ID number)

- The student's marks are printed in student number order in a compressed table format suitable for compact instructor only paper records. The compressed format prints 216 students and their test scores per page.



Printouts and PDF options

Option Settings

Summary of the answer key selections

- The current settings for Scan Exam options, i.e. title, marking method, custom weights, and alternate answers are detailed in a print format.

Student Answers

Summary of all bubbled answers (each student ID with summary of results/responses)

- Individual student grades, raw score, number correct, number incorrect and question responses are printed ten students per page. Correct responses appear in normal font, incorrect are bolded and questions turned off (not marked) as per the master answer key, appear non-bolded italic.